

Low Woodwind

V.

♩ ≈ 60

*dolce*

*mf*

8

3

3

3

3

3

5

5

14

5

5

5

5

5

17

19

21

23

5

5

5

5

24

5

5

5

5

25

5

5

5

5

V.

26

27

The musical score for the bass line of 'The Rose Tree' is written on a single staff in bass clef. The key signature has three sharps (F#, C#, G#). The melody consists of several measures, with some notes beamed together and others marked with a '5' above them. A large slur covers the entire sequence of notes.

[illegible]

29

5 5 5

[illegible]

31

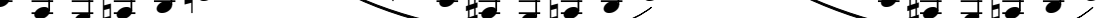


Example 31 is a single-staff musical score in treble clef with a key signature of one sharp (F#). The melody is composed of eighth and sixteenth notes. A long slur covers the first two measures, which contain a series of eighth notes. The third measure features a half note, and the fourth measure contains a quarter note. The fifth measure is a half note, and the sixth measure is a quarter note. The seventh measure is a half note, and the eighth measure is a quarter note. The ninth measure is a half note, and the tenth measure is a quarter note. The eleventh measure is a half note, and the twelfth measure is a quarter note. The thirteenth measure is a half note, and the fourteenth measure is a quarter note. The fifteenth measure is a half note, and the sixteenth measure is a quarter note. The seventeenth measure is a half note, and the eighteenth measure is a quarter note. The nineteenth measure is a half note, and the twentieth measure is a quarter note. The twenty-first measure is a half note, and the twenty-second measure is a quarter note. The twenty-third measure is a half note, and the twenty-fourth measure is a quarter note. The twenty-fifth measure is a half note, and the twenty-sixth measure is a quarter note. The twenty-seventh measure is a half note, and the twenty-eighth measure is a quarter note. The twenty-ninth measure is a half note, and the thirtieth measure is a quarter note. The thirty-first measure is a half note, and the thirty-second measure is a quarter note. The thirty-third measure is a half note, and the thirty-fourth measure is a quarter note. The thirty-fifth measure is a half note, and the thirty-sixth measure is a quarter note. The thirty-seventh measure is a half note, and the thirty-eighth measure is a quarter note. The thirty-ninth measure is a half note, and the fortieth measure is a quarter note. The forty-first measure is a half note, and the forty-second measure is a quarter note. The forty-third measure is a half note, and the forty-fourth measure is a quarter note. The forty-fifth measure is a half note, and the forty-sixth measure is a quarter note. The forty-seventh measure is a half note, and the forty-eighth measure is a quarter note. The forty-ninth measure is a half note, and the fiftieth measure is a quarter note. The fifty-first measure is a half note, and the fifty-second measure is a quarter note. The fifty-third measure is a half note, and the fifty-fourth measure is a quarter note. The fifty-fifth measure is a half note, and the fifty-sixth measure is a quarter note. The fifty-seventh measure is a half note, and the fifty-eighth measure is a quarter note. The fifty-ninth measure is a half note, and the sixtieth measure is a quarter note. The sixty-first measure is a half note, and the sixty-second measure is a quarter note. The sixty-third measure is a half note, and the sixty-fourth measure is a quarter note. The sixty-fifth measure is a half note, and the sixty-sixth measure is a quarter note. The sixty-seventh measure is a half note, and the sixty-eighth measure is a quarter note. The sixty-ninth measure is a half note, and the seventieth measure is a quarter note. The seventy-first measure is a half note, and the seventy-second measure is a quarter note. The seventy-third measure is a half note, and the seventy-fourth measure is a quarter note. The seventy-fifth measure is a half note, and the seventy-sixth measure is a quarter note. The seventy-seventh measure is a half note, and the seventy-eighth measure is a quarter note. The seventy-ninth measure is a half note, and the eightieth measure is a quarter note. The eighty-first measure is a half note, and the eighty-second measure is a quarter note. The eighty-third measure is a half note, and the eighty-fourth measure is a quarter note. The eighty-fifth measure is a half note, and the eighty-sixth measure is a quarter note. The eighty-seventh measure is a half note, and the eighty-eighth measure is a quarter note. The eighty-ninth measure is a half note, and the ninetieth measure is a quarter note. The ninety-first measure is a half note, and the ninety-second measure is a quarter note. The ninety-third measure is a half note, and the ninety-fourth measure is a quarter note. The ninety-fifth measure is a half note, and the ninety-sixth measure is a quarter note. The ninety-seventh measure is a half note, and the ninety-eighth measure is a quarter note. The ninety-ninth measure is a half note, and the hundredth measure is a quarter note.

32



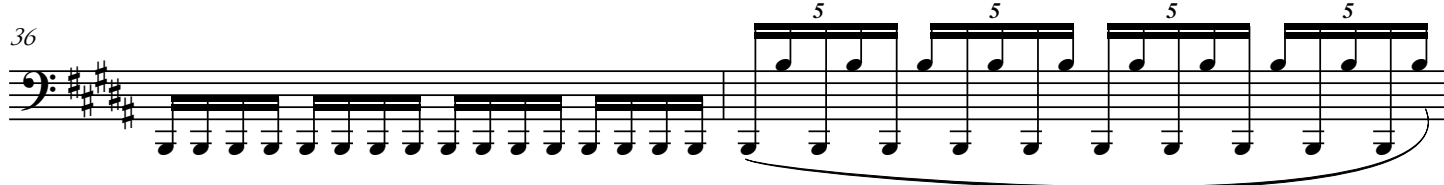
33



34



36



38



41



45



50



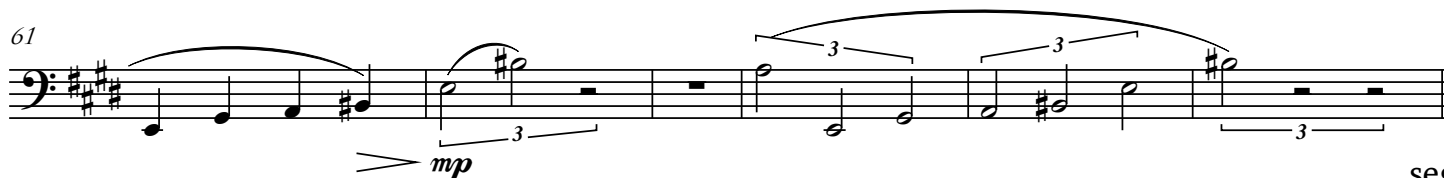
54



57



61



segue