

Treble 8va

# Continental Divide

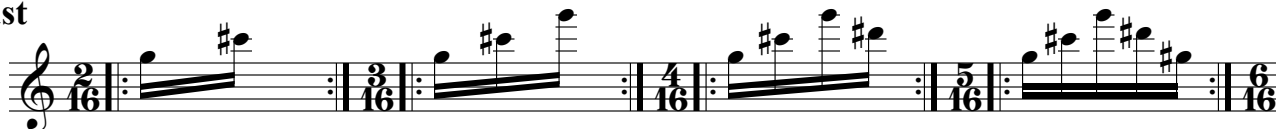
(Orchestra)  
Patterns at 14,000 Feet

David Rosenboom  
Denver, 1964

Play patterns in order repeating each a large number of times. Play at different temporal shifts or "phases," all playing the same tempo. Stay in the same octave. Do not multiply or divide speeds.

## Fast

Treble 8va



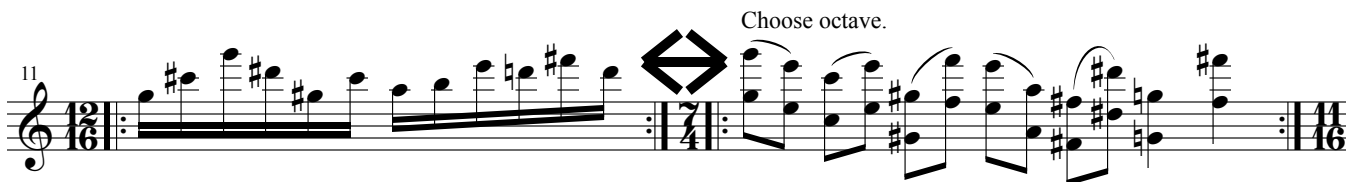
Trb. 8va



Trb. 8va



Trb. 8va



Trb. 8va



Trb. 8va



Trb. 8va

