

Battle Hymn of Insurgent Arts

With lyrics adapted from Mark Twain's "Battle Hymn of the Republic (Brought Down to Date)" ca. 1900 with modified chorus added and a nod to Ray Charles' 1972 album "A Message from the People"

David Rosenboom

Out of time (singer enters stage)
 soft metallic glisses...
 sliding fingers on strings...

Lento ♩ = 42

7 **12** **10**

p **mf** **mp**

Andante ♩ = 74

3

22

mp

32

41 **slap**

40 **mf**

48 **rit.**

Medium rock groove ♩ = 112

55 **mf**

59

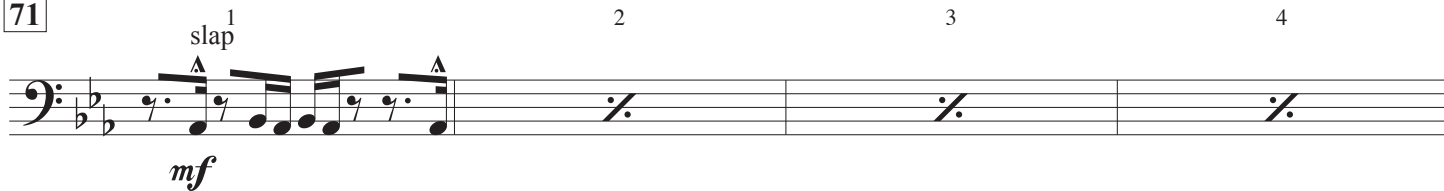
63



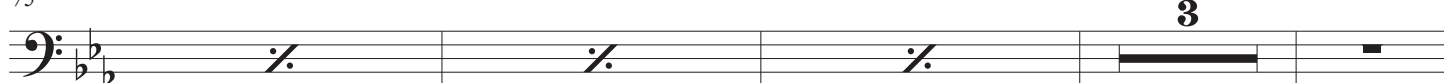
67



71



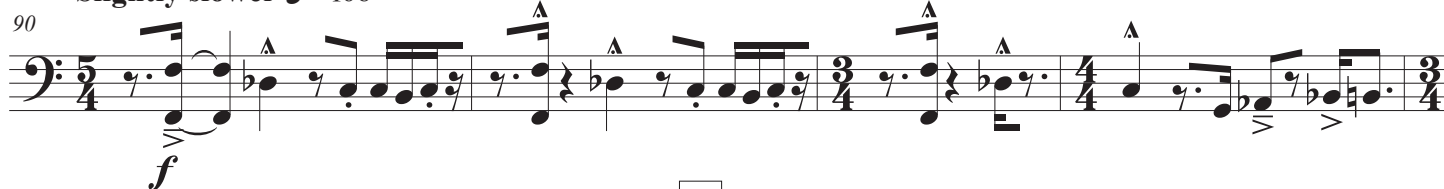
75



82



Slightly slower ♩ = 108



94



98



102



104

110

ff

109

mf

f

117

ff

123

G.P. Grand ♩ = 74

ff

ff

130 follow singer's time, a la recitative

141

rit. Thoughtful ♩ = 52

p

mp

158

ff

Grand ♩ = 74

164

8

sustained effects

ff